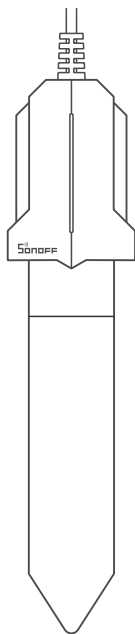


SONOFF MS01

Manual de usuario V1.5



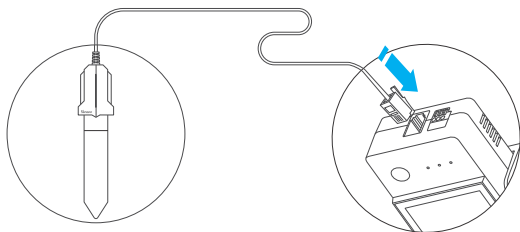
Sensor de humedad del suelo

Introducción al producto

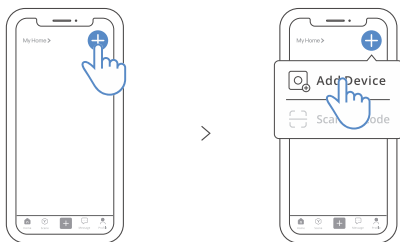
MS01 es un sensor de humedad del suelo que se puede conectar con el interruptor inteligente SONOFF TH Origin/Elite para su funcionamiento. Con el MS01 podrá ver la humedad relativa del suelo de forma remota y preestablecer el límite de humedad en la aplicación eWeLink. Este también asiste en el riego automático a través de la función de "Control Automático" y "Ambiente Inteligente" dentro de la aplicación. Compatible con Google Assistant, para que pueda revisar la humedad mediante su voz.

Instrucciones

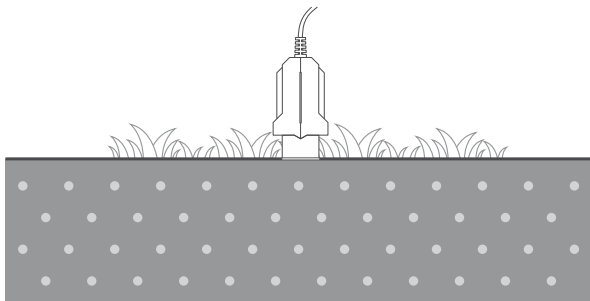
1. Conecte el sensor con el TH Origin/Elite.



2. Añada el TH Origin/Elite a la aplicación de eWeLink.



3. Inserte el MS01 en el suelo de manera vertical y mantenga la línea blanca del sensor al mismo nivel con el suelo.



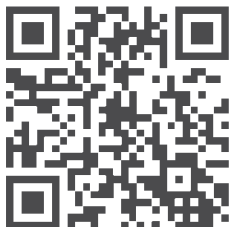
AVISO

1. Este producto no es un juguete y no está destinado a ser utilizado por niños. Sólo para uso de adultos.
2. El aparato es adecuado sólo para climas moderados.
3. No coloque fuentes de llama desnuda, como velas, sobre el aparato.

Especificaciones

Modelo	MS01
Tensión de funcionamiento	3,3 V (salida TH Origin/Elite)
Conector	RJ9 (4P4C)
Rango de protección	IP55
Humedad de funcionamiento	0 % - 100% RH
Temperatura de funcionamiento	0°C-60°C
Longitud del cable	0,5 m
Longitud máx. de extensión	10 m
Material	PC V0
Dimensiones	130x30x13mm

Manual de usuario



<https://sonoff.tech/usermanuals>

Escanee el código QR o visite el sitio web para consultar la guía del usuario detallada y ayuda.

FCC compliance statement

1.This device complies with part 15 of the FCC Rules. Operation is subject to the following two conditions:

- (1) This device may not cause harmful interference, and
- (2) This device must accept any interference received, including interference that may cause undesired operation.

2.Changes or modifications not expressly approved by the party responsible for compliance could void the user's authority to operate the equipment.

Note: This equipment has been tested and found to comply with the limits for a ClassB digital device, pursuant to part 15 of the FCC Rules. These limits are designed to provide reasonable protection against harmful interference in a residential installation. This equipment generates, uses and can radiate radio frequency energy and, if not installed and used in accordance with the instructions, may cause harmful interference to radio communications. However, there is no guarantee that interference will not occur in a particular installation. If this equipment does cause harmful interference to radio or television reception, which can be determined by turning the equipment off and on, the user is encouraged to try to correct the interference by one or more of the following measures:

- Reorient or relocate the receiving antenna.
- Increase the separation between the equipment and receiver.
- Connect the equipment into an outlet on a circuit different from that to which the receiver is connected.
- Consult the dealer or an experienced radio/TV technician for help.

FCC Radiation Exposure statement:

This equipment complies with FCC radiation exposure limits set forth for an uncontrolled environment.

This equipment should be installed and operated with minimum distance of 20 cm between the radiator and your body.

This transmitter must not be co-located or operating in conjunction with any other antenna or transmitter.



WEEE Disposal and Recycling Information

All products bearing this symbol are waste electrical and electronic equipment (WEEE as in directive 2012/19/EU) which should not be mixed with unsorted household waste. Instead, you should protect human health and the environment by handing over your waste equipment to a designated collection point for the recycling of waste electrical and electronic equipment, appointed by the government or local authorities. Correct disposal and recycling will help prevent potential negative consequences to the environment and human health. Please contact the installer or local authorities for more information about the location as well as terms and conditions of such collection points.

Scatola	Manuale
PAP 21	PAP 22
Carta	Carta
RACCOLTA	
Verifica le disposizioni del tuo Comune. Separa le componenti e conferiscile in modo corretto.	

产品中有害物质的名称及含量

部件名称	有害物质					
	铅 (Pb)	汞 (Hg)	镉 (Cd)	六价铬 (Cr(VI))	多溴联苯 (PBB)	多溴二苯醚 (PBDE)
塑料件	o	o	o	o	o	o
电子元器件	x	o	o	o	o	o
包装盒	o	o	o	o	o	o
PCB板	o	o	o	o	o	o
五金件	o	o	o	o	o	o

本表格依据SJ/T 11364 的规定编制：

o：表示该有害物质在该部件所有均质材料中的含量均在GB/T 26572规定的限量要求以下；

x：表示该有害物质至少在该部件的某一均质材料中的含量超出GB/T 26572规定的限量要求。

SAR Warning

Under normal use of condition, this equipment should be kept a separation distance of at least 20 cm between the antenna and the body of the user.

Dans des conditions normales d'utilisation, cet équipement doit être maintenu à une distance d'au moins 20 cm entre l'antenne et le corps de l'utilisateur.

EU Declaration of Conformity

The manufacturer hereby, declares that this equipment M501 is in compliance with the applicable Directives and European Norms, and amendments. The full text of the EU declaration of conformity is available at the following internet address: <https://sonoff.tech/compliance/>.



FR

Cet appareil
et son cordon
se recyclent

À DÉPOSER
EN MAGASIN



OU

À DÉPOSER
EN DÉCHÈTERIE



Points de collecte sur www.quefairedemesdechets.fr
Privilégiez la réparation ou le don de votre appareil !



SONOFF

Shenzhen Sonoff Technologies Co., Ltd.

3F & 6F, Bldg A, No. 663, Bulong Rd, Shenzhen, Guangdong, China

ZIP code: 518000

Website: sonoff.tech

MADE IN CHINA