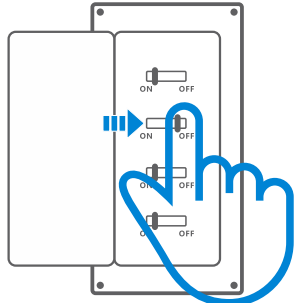


Wi-Fi Smart Wall Switch

1

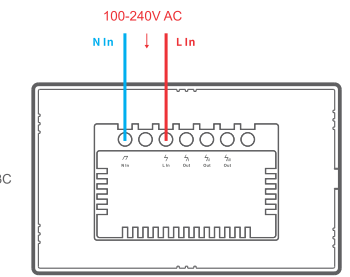
Power off
Ausschalten
Apagado
Éteindre
Spegnimento
Выключить
Desligar



To avoid electric shocks, please consult the dealer or a qualified professional for help when installing and repairing.
Wenden Sie sich bitte an den Händler oder einen qualifizierten Fachmann, um Hilfe bei der Installation und Reparatur zu erhalten...

2

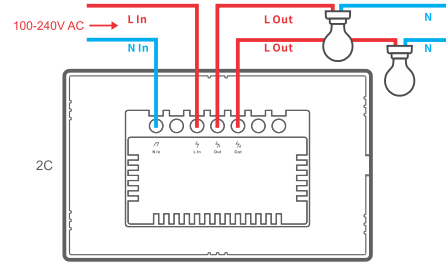
Wiring instruction
Verkabelungsanleitung
Instrucciones de cableado
Instructions de câblage
Istruzioni per il cablaggio
Инструкции по проводке
Instruções de instalação



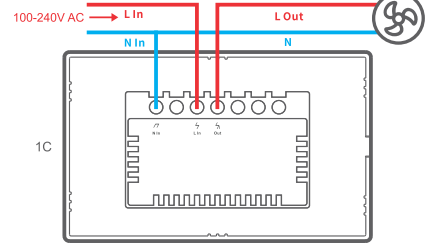
Neutral input
Nullleiter-Eingang
Entrada de neutro
Entrée neutre
Ingresso neutro
Вход нуля
Entrada neutro

Live output
Stromführender Ausgang
Salida de activo
Sortie sous tension
Uscita fase
Выход фазы
Saída fase

Light fixture wiring instruction
Anleitung zur Verkabelung von Leuchten
Instrucciones de cableado de aparato deluminarias
Instruções de câblage do plafonjier
Istruzioni per il cablaggio della lampada
Инструкция по подключению проводки освещения
Instrução para instalação de lâmpadas



Appliance wiring instruction
Anleitung zur Verkabelung von Geräten
Instrucciones de cableado de aparatos
Instruções de câblage de l'appareil
Istruzioni per il cablaggio dell'apparecchio
Инструкция по подключению оборудования
Instrução para instalação de eletrodoméstico

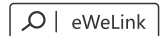


3

Make sure the neutral wire and live wire connection is correct.
Vergewissern Sie sich, dass der Anschluss von Neutralleiter und stromführender Phase korrekt ist.
Compruebe que las conexiones de cable neutro y activo sean correctas.

3

Download App
APP herunterladen
Descargar la aplicación
Télécharger l'application
Scarica la App
Скачать приложение
Baixe o App



LIKE IT!

Glad to know you are satisfied with SONOFF products.
It would mean a lot to us if you can take a minute to share your buying experience.



Share it on Amazon



Share it on your social media



Share it with your friends and family



Get the latest news by following us:

New arrival
Promotion
How-to videos



HAVE A PROBLEM?

We are so sorry for the inconvenience caused by the product.
Please contact us for help via the email address below.

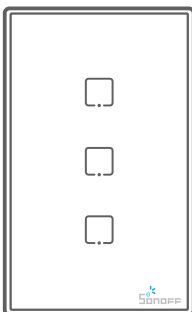


support@itead.cc

We will get back to you as soon as possible.

4

Power on
Einschalten
Encender
Allumer
Accensione
Включить
Ligar



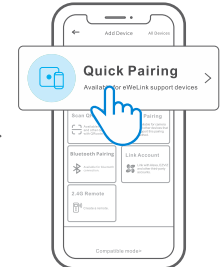
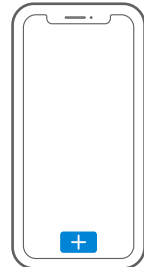
After powering on, the device will enter the quick pairing mode (Touch) during the first use. The Wi-Fi LED indicator changes in a cycle of two short and one long flash and release.
Nach dem Einschalten wechselt das Gerät bei der ersten Inbetriebnahme in den Schnellkopplungsmodus (Touch). Die WLAN-LED-Anzeige zu einem Intervall von „zweimaligem kurzen Blinken und einem langen Blinken wechselt“.



The device will exit the quick pairing mode (Touch) if not paired within 3mins. If you want to enter this mode, please long press any configuration button for about 5s until the Wi-Fi LED indicator changes in a cycle of two short and one long flash and release.
Das Gerät beendet den Schnellkopplungsmodus (Touch), wenn innerhalb von 3 Minuten keine Kopplung erfolgt. Wenn der Schnellkopplungsmodus erneut aufgerufen werden soll, drücken Sie bitte eine Konfigurationstaste 5 Sekunden, bis die WLAN-LED-Anzeige zu einem Intervall von zweimaligem kurzen Blinken und einem langen Blinken wechselt und lassen Sie erst dann die Taste los.

5

Add the device
Gerät hinzufügen
Añadir el dispositivo
Ajouter l'appareil
Aggiungere il dispositivo
Добавить устройство
Adicione o aparelho



Tap "+" and select "Quick Pairing", then operate following the prompt on the APP.
Tippen Sie auf „+“, wählen Sie „Schnellkopplung“ und arbeiten Sie dann gemäß der Aufforderung auf der app.
Pulse "+" y seleccione "emparejamiento rápido", luego opere siguiendo las indicaciones de la aplicación.
Tapez sur « + » et sélectionnez « Appairage rapide », puis suivez l'invite sur l'application.
Toccare "+" e selezionare "Accoppiamento rapido", quindi procedere seguendo le indicazioni dell'app.

User Manual



https://sonoff.tech/usermanuals

Scan the QR code or visit the website to learn about the detailed user manual and help.
Scannen Sie den QR-Code oder besuchen Sie die Website um auf die detaillierte Bedienungsanleitung zuzugreifen und Hilfe.
Escanee el código QR o visite el sitio web para consultar la guía del usuario detallada y ayuda.

Scan the QR code to read the voice control instruction for Amazon Echo and Google Home.
Scannen Sie den QR-Code, um die Anweisungen für die Sprachsteuerung für Amazon Echo und Google Home zu lesen.
Escanee el código QR para leer las instrucciones del control por voz de Amazon Echo y Google Home.

Hereby, Shenzhen Sonoff Technologies Co., Ltd. declares that the radio equipment type T0US1C, T0US2C, T0US3C, T2US1C, T2US2C, T2US3C, T3US1C, T3US2C, T3US3C are in compliance with Directive 2014/53/EU. The full text of the EU declaration of conformity is available at the following internet address:

https://sonoff.tech/usermanuals

FCC Warning

Changes or modifications not expressly approved by the party responsible for compliance could avoid the user's authority to operate the equipment.
This device complies with part 15 of the FCC Rules. Operation is subject to the following two conditions: (1) This device may not cause harmful interference, and (2) this device must accept any interference received, including interference that may cause undesired operation.

FCC Radiation Exposure Statement:

This equipment complies with FCC radiation exposure limits set forth for an uncontrolled environment. This equipment should be installed and operated with minimum distance 20cm between the radiator & your body.
Note: This equipment has been tested and found to comply with the limits for a Class B digital device, pursuant to part 15 of the FCC Rules. These limits are designed to provide reasonable protection against harmful interference in a residential installation.

- Reorient or relocate the receiving antenna.
—Increase the separation between the equipment and receiver.
—Connect the equipment into an outlet on a circuit different from that to which the receiver is connected.
—Consult the dealer or an experienced radio/TV technician for help.

Este equipamento não tem direito à proteção contra interferência prejudicial e não pode causar interferência em sistemas devidamente autorizados.

Shenzhen Sonoff Technologies Co., Ltd.
1001, BLDG8, Lianhua Industrial Park, shenzhen, GD, China
ZIP code: 518000
Website: sonoff.tech

